

AUTOCAD GENERATED DRAWING, DON'T CHANGE BY HAND

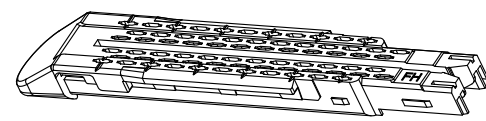
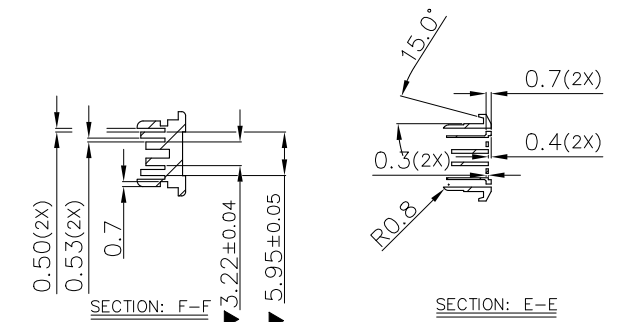
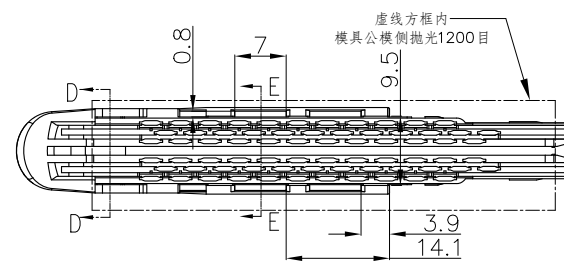
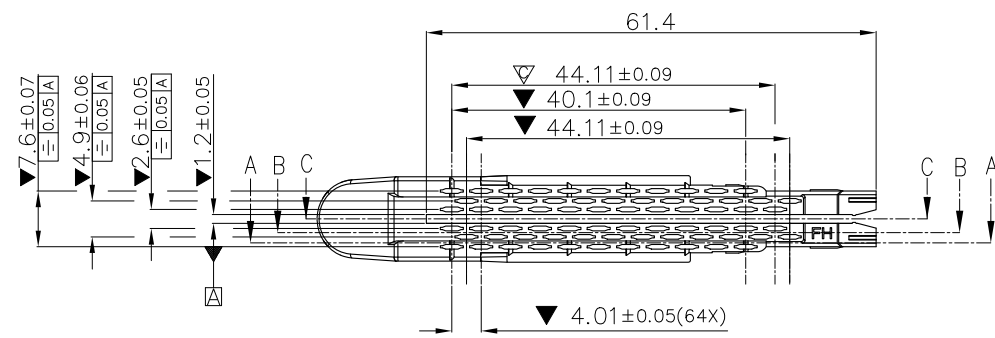
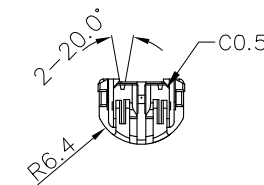
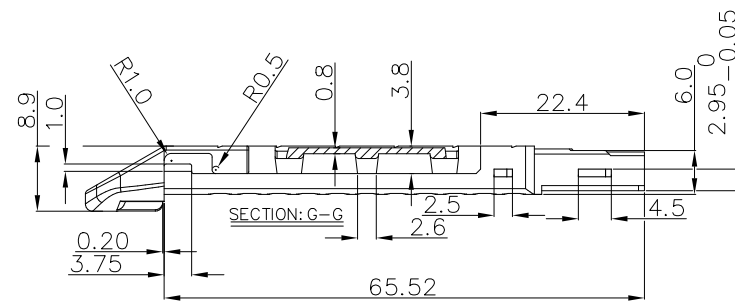
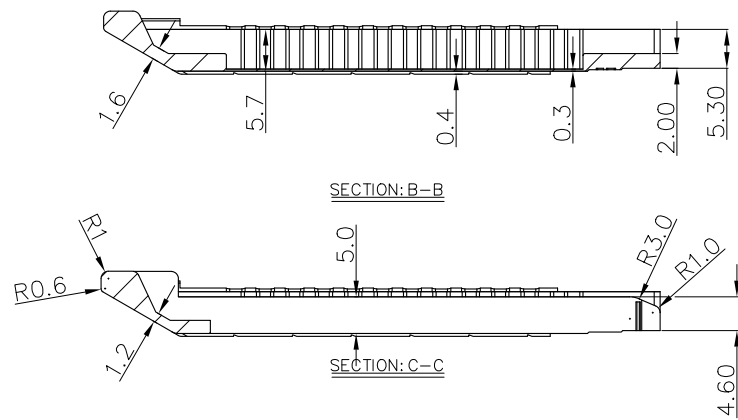
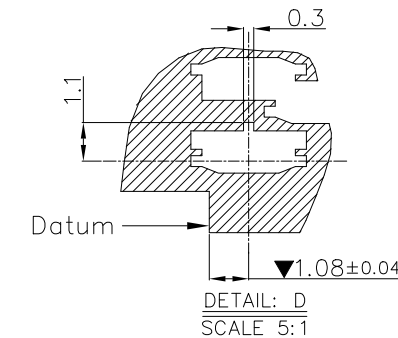
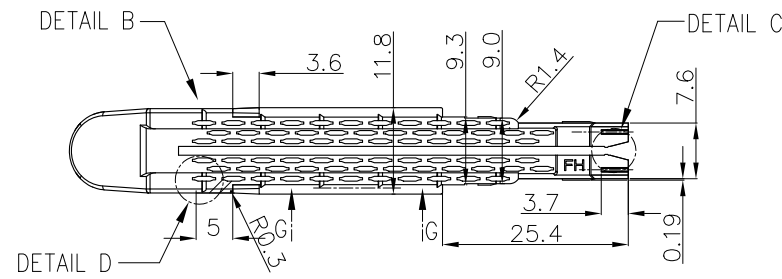
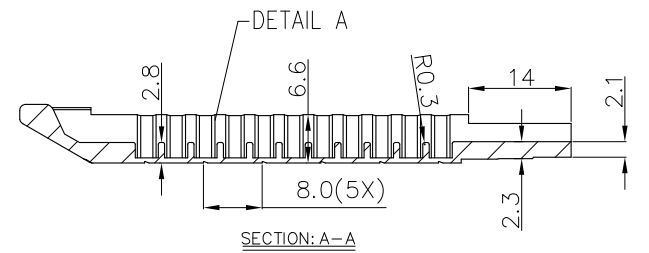
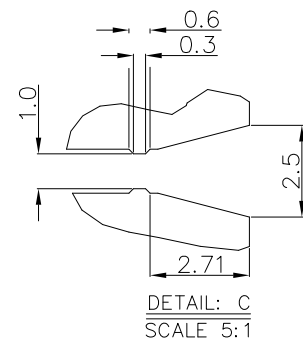
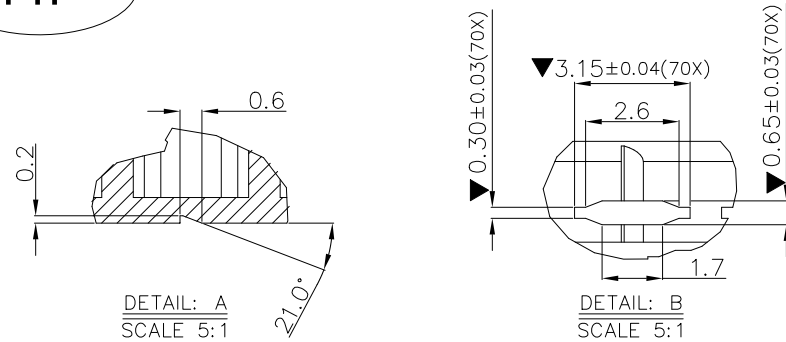
注: 零件未注公差 MT5 GB/T14486-2008		
线性尺寸: a— 固定尺寸; b— 公差带		
基本尺寸	公差种类	公差带
>0-3	a	±0.10
	b	±0.20
>3-6	a	±0.12
	b	±0.22
>6-10	a	±0.14
	b	±0.24
>10-14	a	±0.16
	b	±0.26
>14-18	a	±0.19
	b	±0.29
>18-24	a	±0.22
	b	±0.32
>24-30	a	±0.25
	b	±0.35
>30-40	a	±0.28
	b	±0.38
>40-50	a	±0.32
	b	±0.42
>50-65	a	±0.37
	b	±0.47

RoHS
HF

REV.	ECN. NO.	APPD.
A	ECN190404003	Mike.Wu
B	ECN191217014	River
C	ECN201026018	Mike.Wu

NOTES:

- 1.DIMENSIONS SHALL BE INTERPRETED PER ASME Y14.5M-1994;
- 2.MATERIAL: LCP A130
- 3.THE DIMENSIONS MARKED ▼ WILL BE CHECKED BY Q.C. AND PROCESS ENGINEERS; AND THE DIMENSIONS MARKED ∇ WILL BE MET CPK >=1.33;
- 4.GATE REMAINING NOT EXCEED SURROUNDING SURFACE;
- 5.THE LOGO MARK IS BELOW THE SURFACE 0.10MM;
- 6.TOOLING REQUIREMENT:
 - 6.1 MOLD FINISH TO BE "A3"and"B1" ON THE SURFACE;
 - 6.2 SURFACE TO BE FREE OF ALL WITNESS LINE WHERE INDICATED;
 - 6.3 PARTING LINE AND WITNESS LINE MISMATCHES ARE NOT TO EXCEED 0.05MM;
 - 6.4 FLASH NOT TO EXCEED 0.03MM;
 - 6.5 ALL INTERNAL SHARP CORNERS IN 3D CAD MAY HAVE MOLDED PART RADIUS MAXIMUM OF 0.25MM;
 - 6.6 GATES ARE TO BE TRIMMED FLUSH OR WITHIN 0.08MM OF SURROUNDING SURFACE;
 - 6.7 EJECTOR PIN DEPRESSIONS AARE TO BE FLUSH OR MAXIMUM 0.05MM SUBFLASH OF SURROUNDING SURFACE;
 - 6.8 MOLD DESIGN TO MINIMIZE EJECTION PIN MARKS,GATE BLUSH,FLOW LINES AND WELD MARKS;
 - 6.9 NO EJECTOR,CAVITY,REVERSION PINS OF ANY KIND ALLOWED IN CROSS HATCHED AREAS.
- 7.HARMFUL MATERIAL SHOULD MEET DOCUMENT "DQSP2014".



060-*001-361
PART COLOR
0 NATURAL
1 GRAY

UNITS: mm	GENERAL TOLERANCE		APPROVED: Mike Wu	PART NO.: 060-*001-361
DATE: 10/26/20	X.*X.*X.*	X.* ±3° .X.* ±2°	CHECKED: Stone Chen	TITLE: CUSTOMER DRAWING FOR 45 钎枪 灰轴
SCALE: 1:1			DRAWING: Bo Liu	DRAWING NO.: 820-0000-0736
SHEET: 1/1	MATERIAL: △	Q'TY N/A	 Drapho ELECTRONICS TECHNOLOGY CO., LTD	
REV. C	FINISH: N/A	⊕		

060-0001-361	/	B
060-1001-361	冷灰9U	Rev
PANTONE NO	REMARK	